

Tecnoscan SC



Instruction manual





This quick guide outlines the primary user instructions for Tecnoscan SC.



First time use – activation

Press and hold the power button on the scanner until the blue LED switches on. Download the Tecnoscan Connect app from Google Play Store or the App Store. Once downloaded launch the app. To activate the scanner successfully you will need ensure your scanner is charged and that you have an internet connection.



1. App requests to connect to scanner
Note if the Wi-Fi LED flashes on the scanner it is not connected to any smart device.



2. Select Tecnoscan SC from the Wi-Fi page



3. App requests to connect to the internet



4. Select your local Wi-Fi network to connect to the internet



5. App requests to connect back to the scanner



6. Select Tecnoscan SC from the Wi-Fi page

Normal start up process

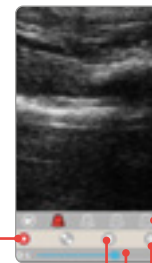
After a few seconds, the ultrasound image will appear. Touch anywhere on the screen to bring up the live scanning menu.



1. App requests to connect to scanner



2. Select Tecnoscan SC from the Wi-Fi page



Start recording

Freeze ultrasound

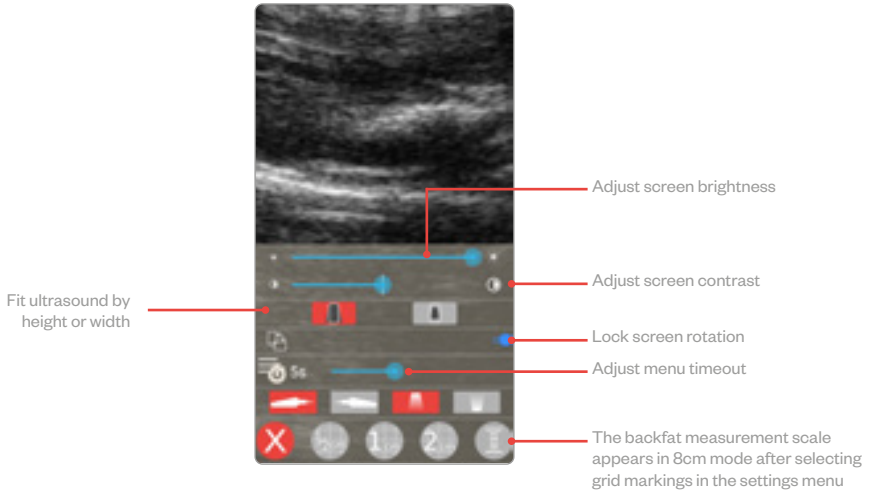
Adjust gain

Adjust scanning depth

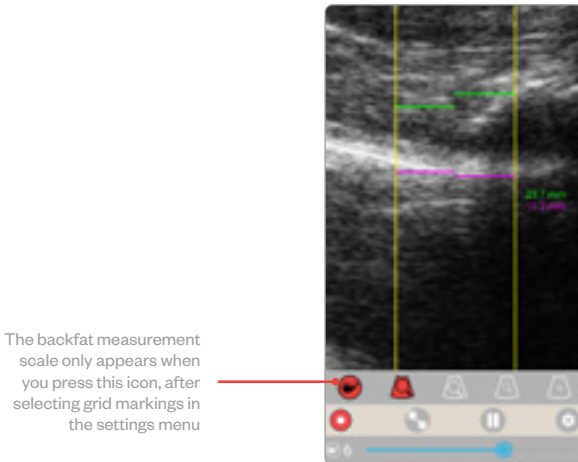
Open Settings

You are now ready to scan

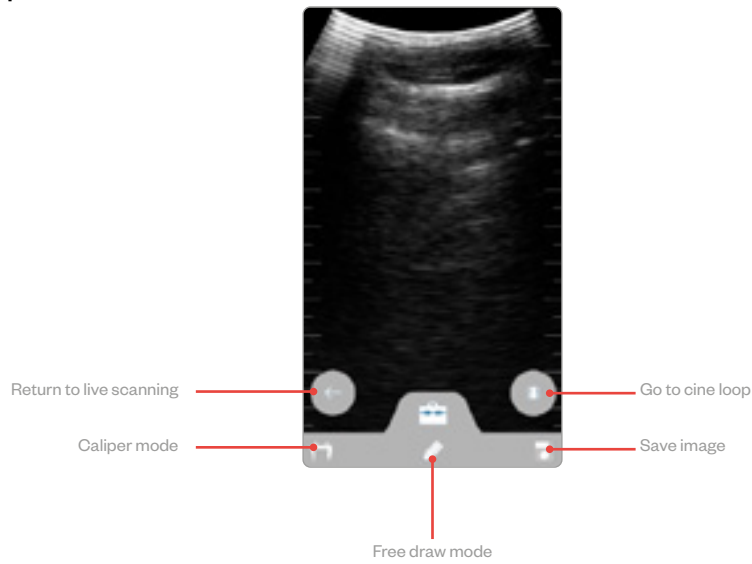
Settings menu



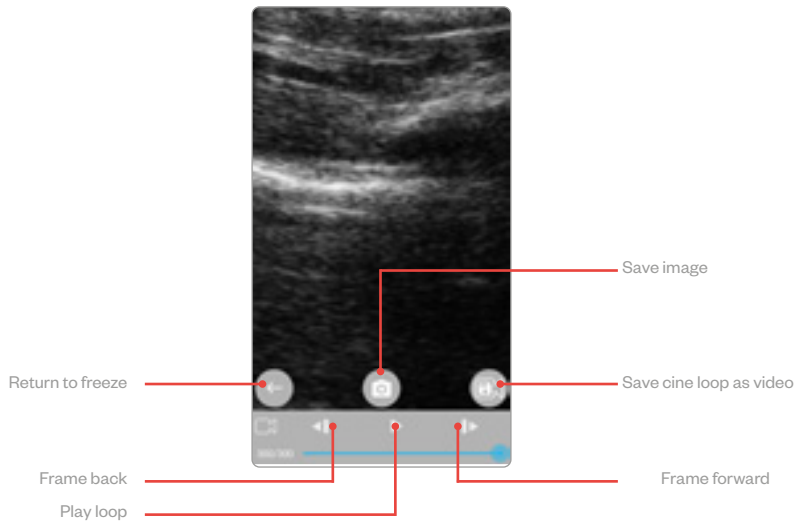
Backfat measurement function



Calipers mode



Cine loop menu



LED sequence



Power LED

Blue flashing	Scanner turning on
Blue	Scanner on and battery between 66–100% charge
Yellow	Scanner on and battery between 33–66% charge
Yellow flashing	Scanner on and battery between 0–33% charge

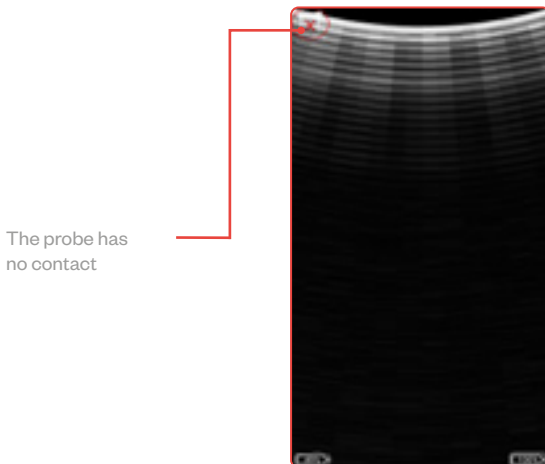
Wi-Fi LED

Blue flashing	Scanner ready for smart device to connect, nothing connected
Blue	Smart device connected
Blue	Scanner is charging when placed on wireless charging plate

Both LEDs

Yellow flashing	Software updating
-----------------	-------------------

Power saving mode



Freeze mode

This function allows you to freeze a live ultrasound image. It will also allow you to review the previous 10 secs of scanning through the app's cine loop functionality. This is good if your sow has run off! All images and clips can be saved in the app by pressing the save icon.

Saved images

All images and video clips are stored in the smart device's photo and video gallery.

Care & maintenance

We have built the Tecnoscan SC to be rugged and water resistant. It does however contain fragile sensitive electronics.

Tecnoscan SC housing is water resistant enough for gentle washing and rinsing. It will not withstand powerful jets of water (e.g. tap full on or hosing it down).

Charging

The scanner is charged via a wireless induction plate. To charge the scanner place it on the plate, with the charging symbol facing down. The scanner should be charged in a cool environment, ideally around 20 °C. When the LED turns off the scanner is fully charged. Tecnoscan SC is compatible with all WPC Qi-v1.2 compliant wireless chargers and has been certified using chargers with an output up to 5V/1A and a charge frequency of 110kHz to 190kHz.

Specification

Size:	235 mm x 50 mm x 70 mm
Weight:	246 grams
Power:	Lithium battery, 3 hours
Sealing:	Splash & dust proof
Operating temperature:	-20 °C to 35 °C
Frequency bands:	16.1
Number of crystals:	64

Scanner operating frequency bands: B1=2412MHz-2462MHz and B2=5150MHz-5250MHz.

Maximum radio-frequency power transmitted in the frequency bands: 16.1dBm for B1 and 18dBm for B2.

Certification

Note: All Tecnovet products are for animal applications only. The product shall not be used outside its scope as declared by the manufacturer. Hereby, Tecnovet, declares that the radio equipment type Tecnoscan SC is in compliance with Directive 2014/53/EU.

The full text of the EU declaration of conformity is available at the following internet address: www.imv-technologies.com.

FCC – This device complies with part 15 of the FCC Rules. Operation is subject to the following two conditions: (1) This device may not cause harmful interference, and (2) this device must accept any interference received, including interference that may cause undesired operation.

If the user changes any modifications not expressly approved by the party responsible for compliance could void the user's authority to operate the equipment.

This device complies with Industry Canada's licence-exempt RSSs. Operation is subject to the following two conditions:

- (1) This device may not cause interference; and
- (2) This device must accept any interference, including interference that may cause undesired operation of the device.

Cet équipement est conforme et se soustrait de Licence au Cahier des Charges sur les Normes Radioélectriques (RSS) d'Industrie Canada.

L'opération est soumise aux deux conditions suivantes:

- (1) Cet appareil ne cause pas d'interférence; et
- (2) Cet appareil accepte toute interférence, y compris les interférence pouvant provoquer un fonctionnement indésirable de l'appareil. Contains IC4511-WL18DBMOD



Agência Nacional de Telecomunicações

"Este equipamento não tem o direito a proteção contra interferência prejudicial e não pode causar interferência em sistemas devidamente autorizados."

07346-19-09891