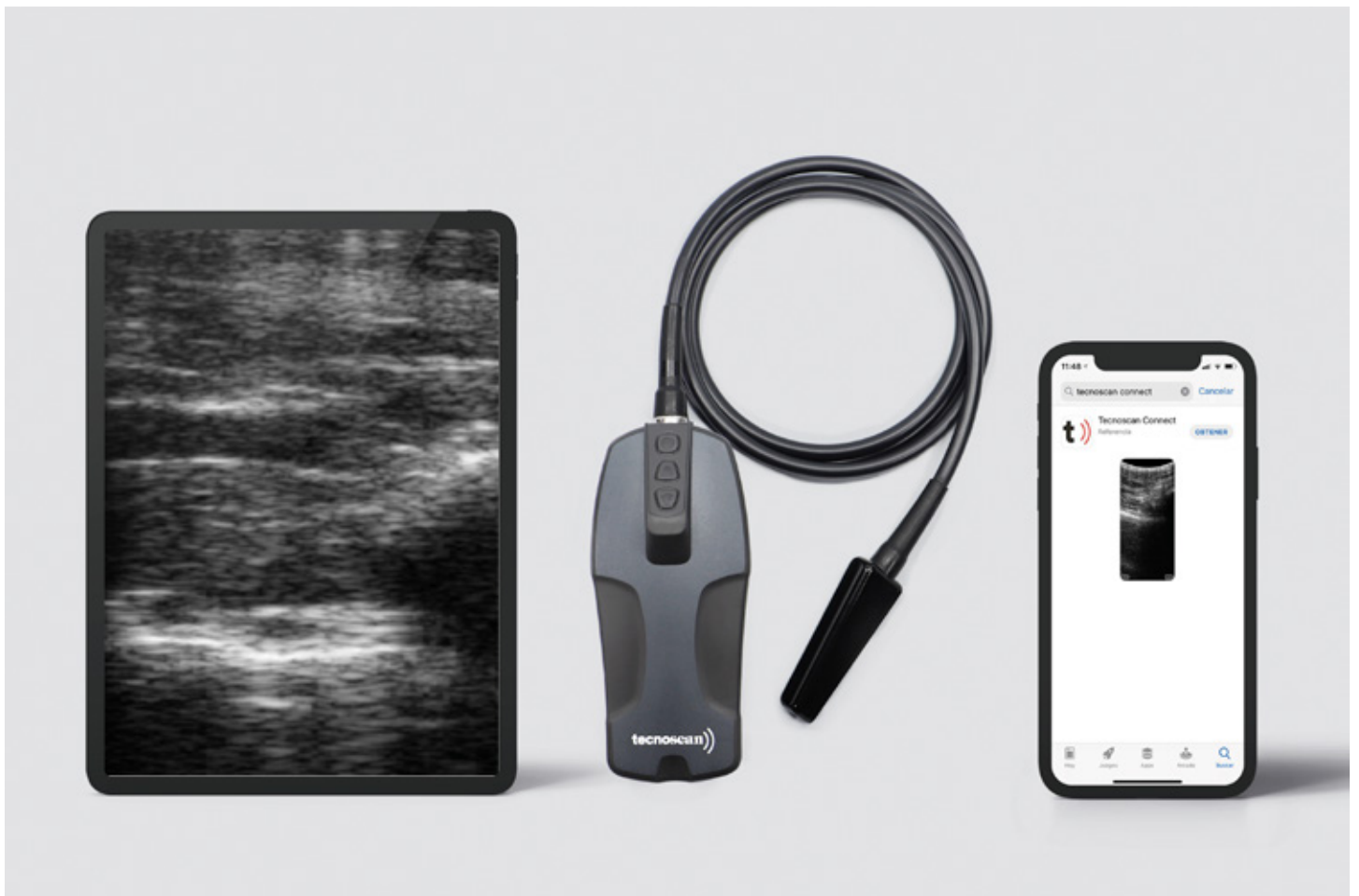


# BL Tecnoscan probe

importvet

Durable ergonomic scanner  
specifically designed for  
bovine farm



# BL Tecnoscan probe

## B - BOVINE — L - LINEAR

Durable ergonomic scanner specifically designed for bovine farm.

### Specifications:

- Battery life: Up to 5 hours
- Charging time: 5.5 hours
- Probe elements: 128
- Size: 190 x 83 x 62 mm
- Weight: 800 g.
- Apps and cloud compatibility: Tecnoscan Connect (Android and iOS)
- Waterproof: No connectors, splash proof
- Certifications: CE/FSS/IC/EAC/Anatel
- Modes: 6, 8, 12 cm
- Auto standby mode: Automatic
- Viewing device: Mobile, tablet
- Measurement: Callipers and grid system
- Image storage: Videos and images saved on the phone or tablet

### Benefits:

- Waterproof and strengthened probe cable
- Good image quality
- Wireless
- Unique data transmission
- Connect up to 3 smart devices
- Low power



App Tecnoscan Connect (Android and iOS)

